

# Eastern Mediterranean *University*



## POSTGRADUATE PROSPECTUS 2023/24



Eastern  
Mediterranean  
University



World  
University  
Rankings  
2024 TOP 800

**we  
are  
emu**





## Dear Students

Dear Students,

The Eastern Mediterranean University stands as the pioneering state university established by statute, leading the Turkish Republic of Northern Cyprus' higher education. With globally recognized accreditations validating its educational programs, the university has solidified its position among today's top academic institutions at a global scale.

One of the greatest characteristics of the Eastern Mediterranean University is its exceptional integration with the city, placing it among the few universities in the world with such a close connection. Our university welcomes over 16,000 students from 109 diverse countries and boasts faculty members from 35 different nations. This vibrant environment fosters an educational experience within an international campus and cross-cultural friendships, preparing you extensively for the future through our global structure. Whilst receiving a quality education here, getting to know different cultures will take you beyond the graduates of other universities. Thus, with the internationally recognized diploma of the Eastern Mediterranean University, wherever you go in the world, you will not feel estranged or encounter adaptation challenges.

The Eastern Mediterranean University not only offers high-quality education and research opportunities but also fosters the students' development through a digital transformation mission and an innovative approach

through integrating social, cultural, and art activities, ensuring that all graduates are well-prepared academically and socially for their professional endeavors. With an elite alumni network of almost 75,000 graduates worldwide, the university takes immense pride in their accomplishments. Our alumni, shaped by our institution, emerge as dynamic, resourceful individuals who understand contemporary needs, possess the skills to address them, and adapt their work to the latest global advancements in their respective fields. In addition to the said skills, our graduates boast unique characteristics including a proactive attitude, competitiveness, and a dedication to continuous personal and professional growth.

The Eastern Mediterranean University boasts a modern, eco-friendly campus designed to meet each student's requirements, providing a wide array of possibilities including sports facilities, hobby or interest-based student clubs, representation in international student societies and cultural promotion, access to Beach Club, and accommodation/housing facilities. We invite you to join us here at the Eastern Mediterranean University, the biggest and strongest investment for your future, where you'll have the chance to immerse yourself in the joys of personal development in a magnificent historic city whilst receiving the world's highest quality education—a foundation to shape your future with precision and purpose.

With my best regards,

Prof. Dr. Hasan Kılıç  
Rector



# Eastern Mediterranean University

## *Our Vision*

The vision of Eastern Mediterranean University is to provide high quality education based on scientific production, and to become a leading and the most preferred university by students and faculty members within its unique geographical location which joins three continents.

## *Our Mission*

The Eastern Mediterranean University has set as a mission becoming a university acting in line with universal values, guided by internationally recognized academic criteria, providing solutions for regional and international problems with a sense of social responsibility, raising graduates who have internalized multiculturalism, free thought, tolerance and participation as well as carrying out work to make international improvements in the fields of production, science, arts and sports.



# About EMU

The Eastern Mediterranean University (EMU) located on the Mediterranean Island of Cyprus was established in 1979 in the Turkish Republic of Northern Cyprus (TRNC) as an institution with the purpose of educating and establishing human resources for a newly-established country. Over the years not only has EMU grown exponentially to claim its position as an internationally recognized state university of the Turkish Republic of Northern Cyprus, with over 70,000 graduates and currently providing education to over 16,000 students, it has also earned its place as a world-wide renowned university, where the medium of conduct is English. EMU prides itself in the quality it offers during the learning experience of each and every one of the students that have passed through its doors. We are proud to be ranked in the 601-800 band in the Times Higher Education Ranking University and are simultaneously ranked in the top 101-150 in the young university band worldwide. EMU provides education to students with a plethora of internationally recognized and awarded accreditations to its name. With over 108 undergraduate programs, 100 postgraduate programs and up to 100% Scholarships for international students, this world ranking university is not only the ideal location to take your next step towards your future international career, but also provides a unique experience to obtain a prestigious degree from a world-class institution.



# EMU's Pride



#1 University in North Cyprus

#1 University in Cyprus

Global Ranking of Academic Subjects 2020

#1 University across Cyprus

Nature Index Ranking 2022

World  
University  
Rankings  
2024 TOP 800



601-800

THE' World  
University Rankings

201-300

THE' Impact  
Ranking

101-150

THE' Young  
Universities Rankings

501-600

Engineering and Technology  
Ranking (2024)

401-500

Physical Sciences Rankings  
(2024)

251-300

Business and Economics  
Rankings (2024)

World  
University  
Rankings  
2024 TOP 800



Impact Ranking

301-400

Partnerships for the Goals  
(2023)

95<sup>th</sup>

No Poverty

101-200

Quality Education



4 Stars

QS STARS<sup>TM</sup>  
RATING SYSTEM



QS

Top 175<sup>th</sup>

University in Emerging Europe & Central Asia in 2022

# EMU

## in Numbers



81%

International Students



70,000+

Alumni



16,000+

Enrolled Students



70+

Student Societies and Clubs

12



Faculties

5

Schools



109

Nationalities

108

Undergraduate Programs

100

Postgraduate Programs

500+

Faculty Members

44

Years old University

33

Research Centers

+11,000

On Campus Bed Capacity

# EMU

## Global

57

Student Exchange Partners

14

Joint and Dual Programs

14

Double Major Programs

# INSTITUTE OF GRADUATE STUDIES AND RESEARCH

## *Message from the Director*

Dear Students and Prospective Students,  
The Eastern Mediterranean University, as the most rooted institution of higher education at the Turkish Republic of Northern Cyprus as well as a world university, offers postgraduate and doctoral study opportunities to students from more than a hundred different countries with its advanced infrastructure, educational accumulation and quality, rich sports, social and cultural activity possibilities, international accreditations, an international environment, a valid diploma recognized throughout the world and qualified faculty.  
Whilst the Eastern Mediterranean University, through its master's programs, aims to bring up the students as entrepreneurs who are ready to compete at the global level, able to produce solutions to problems, have skills for research and analytical thinking, are open to development and progress and act in line with ethical values, the university, through its doctoral programs, also has the goal of educating them as scientists who are

fully-equipped for the academic life to make a universal contribution to science.

As a result of the scientific studies emerging in line with these goals, Eastern Mediterranean University achieves higher and higher in the world rankings every year.

The postgraduate students of the Eastern Mediterranean University have the opportunity to pursue their studies in the rich and dynamic master's and doctoral programs offered in Turkish and English-medium, with and without thesis options and with faculty members who are experts in their fields and can easily communicate with students. We are awaiting to welcome the student candidates who are planning to study in the graduate programs of the Eastern Mediterranean University as a member of the EMU family. I wish you every success in your studies.

Prof. Dr. ALİ HAKAN ULUSOY  
Director

Institute of Graduate Studies and Research





# OUR ROLE

The Institute of Graduate Studies and Research is responsible for overseeing, processing and coordinating matters concerning graduate admissions, assistantships, thesis proposals and defenses, supervisions, and examinations, subject to the by-laws of the University and the regulations laid down by the University Senate. The Institute serves to maintain quality in graduate education by adapting universally accepted academic principles and criteria.



# OUR ACADEMIC SUPPORT

**Getting Settled:** We help you settle at EMU by guiding you from arrival at the airport through to registration to your program. We also have a strong contact team to support and guide you during online applications and procedures from wherever you may be.

**Library:** Eastern Mediterranean University Library supports the education and research activities of the university with its materials and information services. The Library houses a collection of more than 150,000 books, thousands of audio-visuals, and around 300 periodical subscriptions. The Library has membership in more than 50 online databases that allow access to full-text Journals, Reports, Abstracts, E-Books, E-Theses Reviews, Indicators, Statistical Data, Working Papers, Standards as well as bibliographical information resources.

**English:** Students wishing to improve their English Language Level may register for English elective courses listed below after meeting English requirement conditions at first enrollment:

**Classes:** Our academic staff is committed to providing both first-class education and research that makes a difference. The faculty members have a wide range of faculty research interests that allow the practice of interdisciplinary research besides classical research areas. Also, our academic staff is approachable and always ready to help you meet and exceed your own expectations. Classrooms are well equipped and provide a modern learning environment. Online Courses are provided through Learning Management System where students are given access to course resources or materials, as well as a platform for easy interaction from any place they may be located.

**Labs/Studios:** Each faculty is equipped with labs and/or studios that help students acquire procedural skills. The labs and studios are places where the students can observe, practice, explore and solve problems (whether scientific or artistic). Students are coached by their instructors, a process in which they practice handling tools and techniques to enable greater independence through participation.

<b>ENGL 521</b>	Advanced English for IELTS	Elective course for students who want to take the IELTS exam.
<b>ENGL 523</b>	Thesis Writing for Postgraduate Students	Elective course on thesis writing for 2nd year and PhD students.
<b>ENGL 525</b>	Advanced Presentation Skills for Postgraduate Students	Elective course on presentation skills, including thesis defense for 2nd year and PhD students.
<b>ENGL 528</b>	Legal English and TOLES	Elective course on Legal English and TOLES. TOLES, is an internationally-recognized exam testing legal English skills.

**Financial:** EMU has a variety of financial support from which students may benefit during their graduate studies. For scholarships, students can only benefit from one at a time. The table

below gives short information on the nature of the financial support.

Support	What is the criteria?	Who's eligible?	What's the coverage?	What's the duration?	When to apply?	Where to apply?
<b>GRADUATE SCHOLARSHIP *</b>	3.00 (out of 4.00) or higher undergraduate graduation CGPA. The departments will rank the applicants based on their departmental assessment criteria (not only CGPA)	PhD Level: International or Turkish Republic (TR) citizens Master's Level: International or Turkish Republic (TR) citizens	100 % or 50 % tuition fee waiver (Ph.D. level), 100 % or 50 % tuition fee waiver (TR citizens Master's level) 50% tuition fee waiver (International student Master's level)	The standard period of study specified for the registered program (in extended semesters scholarship reduces to half)	During the specified scholarship application period.	Online program application system ( <a href="https://applyonline.emu.edu.tr">https://applyonline.emu.edu.tr</a> )
<b>TRNC GOVERNMENT SCHOLARSHIP</b>	Scholarships are granted by the TRNC to students from third countries (other than TRNC and Turkey) based on the criteria specified Scholarship Committee	All International Students	Covers tuition fees, dormitory fees plus USD 200 allowance (pocket money) per month	The standard period of study specified for the registered program + one additional year at the English Preparatory School if necessary (summer semesters excluded)	After Acceptance to an Academic Program	TRNC Ministry of Education or TRNC Consular Mission abroad
<b>STUDENT ASSISTANTSHIP</b>	Based on criteria specified by the hiring department in the university	All Students with a GPA above 2.00 (but this option is generally for undergraduates)	A monthly stipend based on hourly rates	Determined by the hiring department in the university	Vacancies are usually announced throughout the year.	The hiring department in the university
<b>RESEARCH ASSISTANTSHIP</b>	Regulated by "Regulations for Research Assistant Appointment and Postgraduate Scholarship Implementation"	All Graduate Students with a minimum CGPA 3.00 or above from previous degree. For lower CGPA please read the regulation.	Tuition fees waiver and a salary based on the category	The standard period of study specified for the registered program	Vacancies are usually announced before the commencement of the semester	The hiring department in the university
<b>SPORTS GRANT</b>	The scope of the grant, duration and conditions are regulated by the principles for "Eastern Mediterranean University Sports Grants Application"	Students with exceptional performance in individual or team sport	Covers full or partial tuition fee and/or free accommodation in EMU Dormitories	Regulated by the principles for "Eastern Mediterranean University Sports Grants Application"	Any Time	EMU Sports Directorate
<b>DISCOUNTS</b>	Not Applicable	Siblings who study at EMU undergraduate or associate degree programs	Postgraduate: 10% tuition fee waiver for siblings enrolled in a postgraduate program and have no other form support	Continues until the graduation of the student	Any Time	EMU Accounting Office
<b>SOCIAL AIDS</b>	Have Proof of Financial Constraints	All Registered Students with min GPA 2.00 (undergraduate) and 3.00 (graduate)	Partial coverage of Tuition Fees, Dormitory fees or Free Meals	To be determined by the evaluating committee	Announced on the students portal	Vice Rector's Coordinator Office for Students Affairs
<b>Type C (BAP-C) Scientific Research Project</b>	The scope of the grant, duration and conditions are regulated by the principles for "Eastern Mediterranean University Scientific Research Support Principles"	For PhD programs: successful performance at PhD Qualification Exam and the approval of the thesis proposal by the thesis monitoring committee and the relevant postgraduate committee. For Postgraduate programs with no thesis: may apply for their term projects during the semester of registration.	All expenses necessary for the successful completion of the approved project may be supported, on the condition that the budget has not been exceeded.	The project period is maximum 1 year. An extension of 6 months may be granted two times at most	Project applications are accepted twice a year. Application periods for projects are determined by the Academic Evaluation	Fill in the "Project Application Form" and submit all required documents to the Faculty Dean's Office or School Directorate of the postgraduate student involved in the project.
<b>Conference Support</b>	The scope of the grant, duration and conditions are regulated by the principles for "Eastern Mediterranean University Scientific Research Support Principles"	Doctoral degree candidates (Ph.D. students who have successfully passed the qualifying exam) and research assistants.	Specified at the beginning of each academic year and proposed to the Rector's Office.	One-time payment	During the academic year on a periodical basis	Fill in the "Financial Support Request Form for Academic Conference" and submit all required documents to the relevant Department Head and Dean/Director.
<b>Publication Awards</b>	The scope of the grant, duration and conditions are regulated by the principles for "Eastern Mediterranean University Scientific Research Support Principles"	Both PhD and Master's program students	Specified at the beginning of each academic year and proposed to the Rector's Office.	Payment upon approval of each application	During the academic year	Fill in the "Application Form for Publication Award" and submit all required documents to the relevant Department Head and Dean/Director.

\* Scholarship criteria and coverage are subject to change for each academic year. For more details please visit <https://grad.emu.edu.tr/en/fees/scholarships>

**Career:** The Alumni Relations and Career Research Directorate (known as MIKA) offers consultancy services for students both during their study period and following their graduation.

The diploma of EMU is internationally recognized and diploma approval procedures are also managed by MIKA following the graduation ceremony.

EMU Alumna:

# Evisi Kopliku

Expert on Competitiveness at  
the Regional Cooperation Council (RCC)  
Albania

"I arrived in Cyprus in 2005 and completed both a bachelor's and master's program in Banking and Finance (currently named Finance and Banking) in 2010 as a high honor student. During my master's program, I was given the opportunity to work as a teaching assistant and as Banking and Finance master's program coordinator. It was an enlightening experience as I realized that I liked teaching and doing research.

EMU is not only a place for good education, but also an environment of rich life experience – learning how to live in a community surrounded by international friends. The academic staff was not only good at teaching, but also good counselors. Even after more than a decade since I graduated from EMU, they are always available and happy to help.

After returning to Albania, I worked a few years as an instructor in universities, teaching, doing research, and at the same time being part of NGO's. Later, I worked in the government for 7 years first as Economic Advisor to the Minister of Economic Development, then as Director of the European Integration and Project in the same ministry, and later in the Ministry of Tourism and Environment. Presently, I am working as an Expert on Competitiveness at the Regional Cooperation Council.

If I were asked to choose a university again, I would with no doubt choose the same program at Eastern Mediterranean University."

## International Accreditations



# OUR COURSES

## Program Length:

**Master's with thesis:** Minimum 2, maximum 4 semesters (+ possible 2 semester extensions only for thesis registration)

**Master's without thesis:** Minimum 2, maximum 3 semesters (no possible semester extension)

**Ph.D.:** Maximum 10 semesters (+ possible 2 semester extensions)

**Note:** Those semesters registered ONLY to deficiency and English Support courses (ENGL509/511/513/515) are not included in the maximum duration allowed to complete the given graduate program.

## Scientific Preparation Program (Deficiency Courses):

Students may be subject to the Scientific Preparation Program if they are coming from a different field or need to improve the level of their knowledge in certain subjects. The

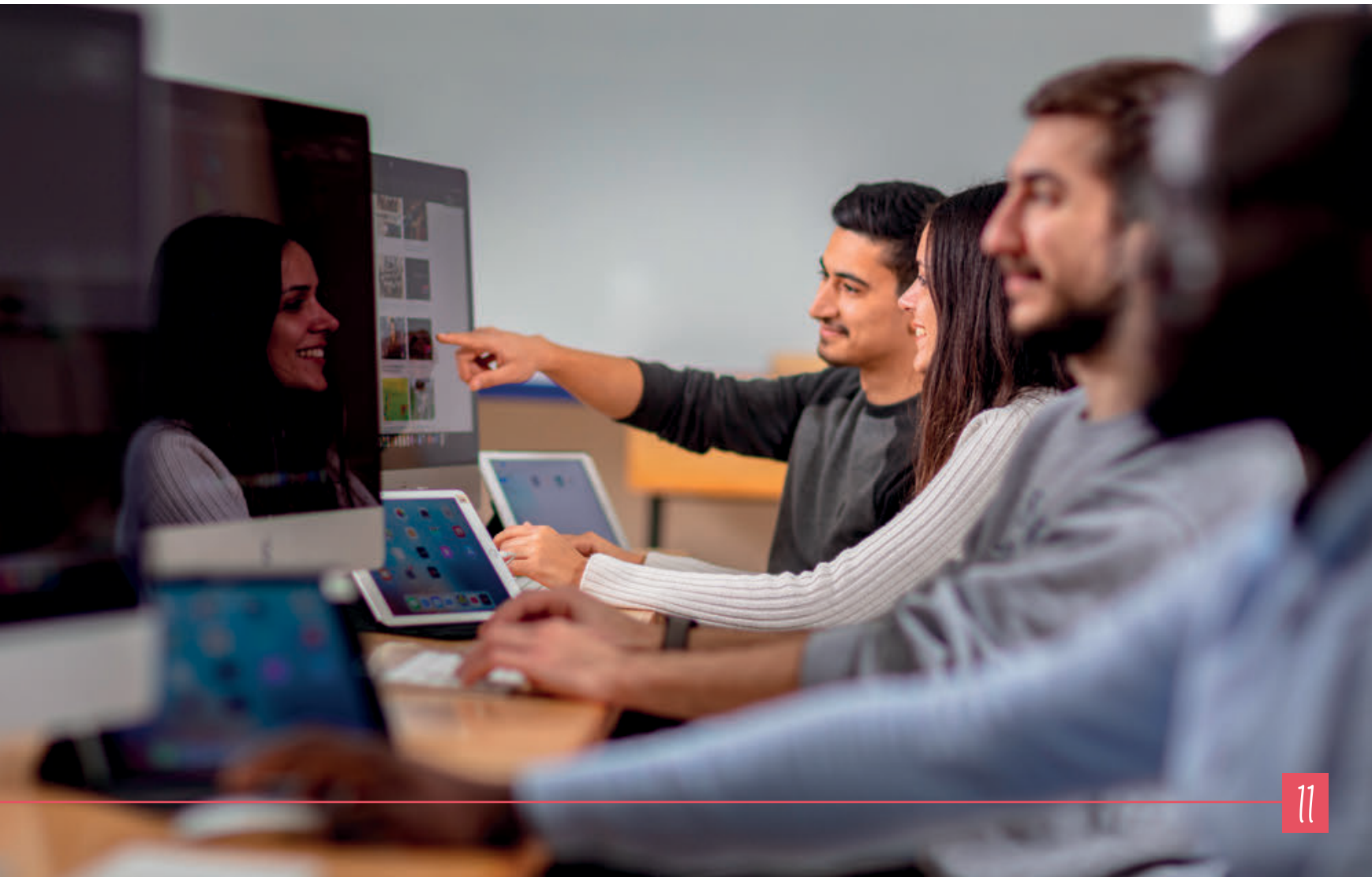
program needs to be completed at most in two semesters most often prior to program courses. Summer instruction cannot be included in this duration.

## When and How to Apply:

EMU does not charge any application fee and applications are accepted twice a year for Fall and Spring semesters. Applicants are advised to make their applications by the end of December or August for Spring or Fall Semester, respectively.

Application deadlines are announced on the website of the Institute. Prospective applicants are required to apply online

<https://applyonline.emu.edu.tr/grad/>.



## Application Procedures:

You may create an online application at <https://applyonline.emu.edu.tr/grad>. Please submit following documents online via online application portal for evaluation.

To complete your registration, following documents must be presented during registration.

1. An official transcript of all university-level (Bachelor / Master) courses taken. A comparative mark/grade table if CGPA on the transcript is not out of 4.00. English translations of these documents are necessary if they are in any language other than English.
2. If any, documentation of scores received for English and academic proficiency exams/tests.
  - Native speakers should indicate the place of birth and citizenship. All others should provide documents of any one of the required English Proficiency Tests.
3. Other Documents
  - a. Statement of Purpose / Intention (Please submit on a separate sheet: Your purpose in applying to the chosen program, explaining your motivation as well as the areas of specialization which would be of interest to you within the discipline).
  - b. A passport-sized (approx. 6 cm x 5 cm) photograph.
  - c. Program specific documents: Architecture (Ph.D. & Master): Portfolio.
  - d. Proposal (for PhD program applications)

## Online Application and Registration procedures:

### Application:

1. Check out our university's programs available at <https://grad.emu.edu.tr/en/programs>,
2. Find the programs that you are interested in (you may apply for maximum of 3 different programs during one application),
3. Apply online at <https://grad.emu.edu.tr/en/admission/online-application>,
4. Check your admission status through the application portal. You will receive an e-signed acceptance letter once your admission is completed and you may proceed with the registration procedures.

Please contact us by email at [igsr@emu.edu.tr](mailto:igsr@emu.edu.tr) or [admission@emu.edu.tr](mailto:admission@emu.edu.tr) for any problems and/or enquiries.

<https://grad.emu.edu.tr/en/admission/registration>

### Registration:

1. Log into the Student Portal (<https://stdportal.emu.edu.tr/>) with your student number and password stated in the acceptance letter(s) you received from our university,
2. If you have been accepted into one or more programs, select and approve the program you wish to study.
3. Go to the 'Financial' section and check your tuition fee status. You can either pay online by debit/credit card or a bank transfer. Payment can be made in full or in installments.
4. Once your payment has been processed, apply for a Student Certificate via the Online Document Application ('Personal' section).
5. During the registration process, click on semester courses link in the 'Academic' section and select your courses,
6. Become part of EMU family and enjoy your studies.
7. According to the immigration rules and regulations of North Cyprus, students are required to bring and present authentic copies of their Admission Letters, Diplomas and Transcripts upon their arrival to the country for the first time.

## Scientific Preparation Program (Deficiency Courses):

Fees for graduate programs are calculated based on the structure of the program to which the students enroll. Thus, the semester fee calculation is done as follows:

(per course fee x number of courses)  
+ thesis fee (if registered)  
+ funds.

However, new students need to deposit a certain amount of fee plus the student fund at first enrollment. This amount is also required to get a confirmation of payment letter for visa purposes (please see your letter of admission). If your payment does not cover the number of courses you have registered, you will need to make an additional payment. If you register for fewer courses, then the remainder of your deposit will be counted towards future course registrations.

## English Requirements:

For master's and PhD programs that are taught in English, evidence of English language ability is required. If you do not have a valid English language qualification that meets the EMU requirements presented in the table below, your level will be assessed by examination at EMU. For more detailed information, please visit; <https://grad.emu.edu.tr/en/admission/english-language-requirement>

\*According to a decision taken by the Student Selection and Placement Center (ÖSYM) on 14.02.2014, IELTS test scores cannot be used for exemption by Turkish citizens.

\*\* Some graduate programs such as the Department of English Language Teaching (ELT) may apply a higher scale regarding English language exemption. Prospective students are advised to contact the relevant academic department for further additional rules and regulations.

Recognized English Language Tests	English requirements for English Medium Programs	Validity Period
	Minimum Score	
TOEFL (IBT)	79	2 years
IELTS (Academic) *	6.5	2 years
PTE Academic (PTE-A)	58	2 years
YDS/YÖKDİL	66	5 years
EMU English Language Exam	75 **	2 years

## Visa Procedures:

If traveling for higher education, an official admission letter from the university will be requested to enter the country. You will also be requested to apply for a student residency permit within maximum 60 days upon arrival. Please consult TRNC

entry requirements with the nearest TRNC foreign mission/representative or Turkish embassy.

See information at <http://www.mfa.gov.ct.tr>

## Program Structure:

### Master's with thesis

- Courses (Core & Elective)
- Seminar
- Thesis
- Oral Thesis Defense

### Non-Thesis Master's

- Courses (Core & Elective)
- Term Project

### PHD

- Courses (Core & Elective)
- Seminar
- PhD Qualification Exam
- Thesis proposal
- Thesis Monitoring (at least 3 Thesis Monitoring Committee [TMC] report)
- Published or to be published article & other academic activities
- Oral Thesis Defense



## Graduate Programs:

All programs listed below are delivered in English language.

	Programs	Master's with thesis ( ) Indicates the number of courses	Non-Thesis Master's ( ) Indicates the number of courses	PHD ( ) Indicates the number of courses
Architecture	Architecture	✓ (7)	✓ (10)	✓ (7)
	Cultural Heritage Studies	✓ (7)		
	Interior Architecture	✓ (7)	✓ (10)	
	Urban Design	✓ (7)	✓ (10)	
Arts & Sciences Faculty	Applied Mathematics & Computer Science (with Thesis)	✓ (7)		✓ (7)
	Chemistry	✓ (7)		✓ (7)
	General Psychology	✓ (7)		✓ (7)
	Information Systems		✓ (10)	
	Mathematics	✓ (7)		✓ (7)
	Medical Biotechnology		✓ (10)	
	Physics	✓ (7)		✓ (7)
Business & Economics Faculty	Finance			✓ (7)
	Finance and Banking (Online)	✓ (7)	✓ (10)	
	Finance and Banking	✓ (7)	✓ (10)	
	Business Administration	✓ (10)	✓ (12)	✓ (7)
	Diplomacy and Conflict Management	✓ (7)		
	Economics	✓ (7)	✓ (10)	✓ (7)
	Energy Economics and Finance	✓ (7)		
	Gender Studies	✓ (7)		
	Human Resource Management		✓ (10)	
	International Relations	✓ (7)	✓ (10)	✓ (8)
	International Trade and Business		✓ (10)	
	Marketing Management	✓ (8)	✓ (10)	
	Communication and Media Studies Faculty	Communication and Media Studies	✓ (7)	
Digital Media and Film			✓ (10)	
Visual Arts and Visual Communication Design			✓ (10)	
Computing and Technology Faculty	Information Technology	✓ (7)	✓ (10)	
Education Faculty	English Language Teaching	✓ (8)	✓ (10)	✓ (8)
	Information and Communication Technologies in Education	✓ (7)	✓ (10)	✓ (7)
	Music Teaching	✓ (8)		
Engineering Faculty	Civil Engineering	✓ (7)		✓ (7)
	Computer Engineering	✓ (7)	✓ (10)	✓ (7)
	Electrical and Electronic Engineering	✓ (7)		✓ (7)
	Engineering Management		✓ (10)	
	Industrial Engineering	✓ (7)	✓ (10)	✓ (7)
	Mechanical Engineering	✓ (7)		✓ (7)
	Software Engineering	✓ (7)		
Law Faculty	Comparative Legal Systems (Joint Program with University of Bologna)		✓ (10)	
Tourism Faculty	Hotel Management (Online)		✓ (10)	
	Tourism Management	✓ (7)	✓ (10)	✓ (7)
Collaborative Program with University of Warwick	MSc Engineering Business Management MSc Supply Chain and Logistics Management	For more information about the program and courses, please visit <a href="https://warwick.emu.edu.tr">warwick.emu.edu.tr</a>		

**Note:** For updated new program list and Turkish taught programs please visit <https://grad.emu.edu.tr>.





**we  
research**

# ACCREDITATIONS, MEMBERSHIPS, CERTIFICATIONS, AND APPROVED CENTERS

Accreditation assures that a university program prepares graduates for their future career. The Eastern Mediterranean University and all its undergraduate and graduate programs are accredited by the Turkish Higher Education Council (YÖK) and EMU works within the framework of YÖK Rules and Regulations.

Additionally, many of our programs are further accredited by major international accreditation bodies and these accreditations are universal. By having these accreditations, graduates can easily find a job and be mobile all around the world.



## University Level Recognitions



YÖK - Turkish Republic  
Higher Education Board



YÖDAK - Higher Education  
Planning, Inspection, Accreditation  
and Evaluation Board



UK ENIC - The UK National  
Information Centre for global  
qualifications and skills



ECFMG - Educational Commission  
for Foreign Medical Graduates



ICE - Institution of Civil Engineers

## University Level Memberships



CMU - Community of Mediterranean Universities



UKENIC (former UK NARIC)



ECCTIS - Education Counseling and Credit Transfer Information Service



EUA - European University Association



EUA-CDE - European University Association



FUIW - The Federation of the Universities of the Islamic World



IAU - International Association of Universities

## Faculty, Department and Program Level Accreditations



Engineering Accreditation Commission

ABET - The Accreditation Board for Engineering and Technology



SABAK - Sağlık Bilimleri Eğitim Programları Değerlendirme ve Akreditasyon Derneği



AQAS - Agency for Quality Assurance through Accreditation of Study Programs



PCN - Pharmacists Council of Nigeria



ASIIN - Accreditation Agency for Degree Programmes in Engineering, Informatics, Natural Sciences and Mathematics



EUQANIE (Euro-Inf) - European Quality Assurance Network for Informatic Education



EPDAD - Öğretmen Eğitim Programları Değerlendirme ve Akreditasyon Derneği



FIBAA - Foundation for International Business Administration Accreditation



TPD - Türk Psikologlar Derneği (Turkish Psychologists' Association)



MiAK - Mimarlık Akreditasyon Kurulu (Architectural Accrediting Board)



NAAB - National Architectural Accrediting Board



TEDQUAL - Teaching Education Quality in Tourism

## Faculty, Department and Program Level Memberships



ACSA - Association of Collegiate Schools of Architecture



EAAE - European Association for Architectural Education



IFI - International Federation of Interior Architects/Designers



AMS - The American Mathematical Society



ECPR - European Consortium for Political Research



PRME - Principles for Responsible Management Education



AACSB - Association to Advance Collegiate Schools of Business



EUPRERA - European Public Relations Education and Research Association



ICO-D - International Council of Design



IAMCR - International Association for Media and Communication Research



ADEE - Association for Dental Education in Europe



TESOL - International Association of Teachers of English to Speakers of Other Languages



IATEFL - International Association of Teachers of English as a Foreign Language



ESTIEM - European Students of Industrial Engineering and Management



EMT - Türkiye Endüstri Mühendisliği Topulukları Birliği



WWD SIE - Worldwide Directory of Systems Engineering and Industrial Engineering Programs



ATLAS - Association for Tourism, and Leisure, Education and Research



ELFA - European Law Faculties Association



IEEE - Institute of Electrical and Electronics Engineers



WDOMS - World Directory of Medical Schools



FIP - International Pharmaceutical Federation



IPSF - International Pharmaceutical Students Federation



WACS World - Association of Chefs Societies



AEHT - European Association of Hotel and Tourism Schools



ADEE - Association for Dental Education in Europe



AMFORHT - The World Association for Hospitality and Tourism Education and Training



COEHRE - Consortium of Institutes of Higher Education in Health and Rehabilitation in Europe



Crossref - Cross Reference



Cumulus Association



ECREA - European Communication Research and Education Association



EPSA - European Pharmaceutical Students Association



EUCEN - European University Continuing Education Network



EURHODIP - International Association supporting Hospitality and Tourism Education and Training



HOSCO - Hospitality Network



ILA - International Language Association



ILTA - International Language Testing Association



IPB - Institut Paul Bocuse



TUSEM - Türkiye Üniversiteler Sürekli Eğitim Merkezleri Konseyi

## Faculty, Department and Program Level Certifications & Approved Centers



ETS - Educational Testing Service



City & Guilds Centre Approval (Unique Centre No. 821314)



EDEXCEL - Pearson



TOLES - Test of Legal English Skills



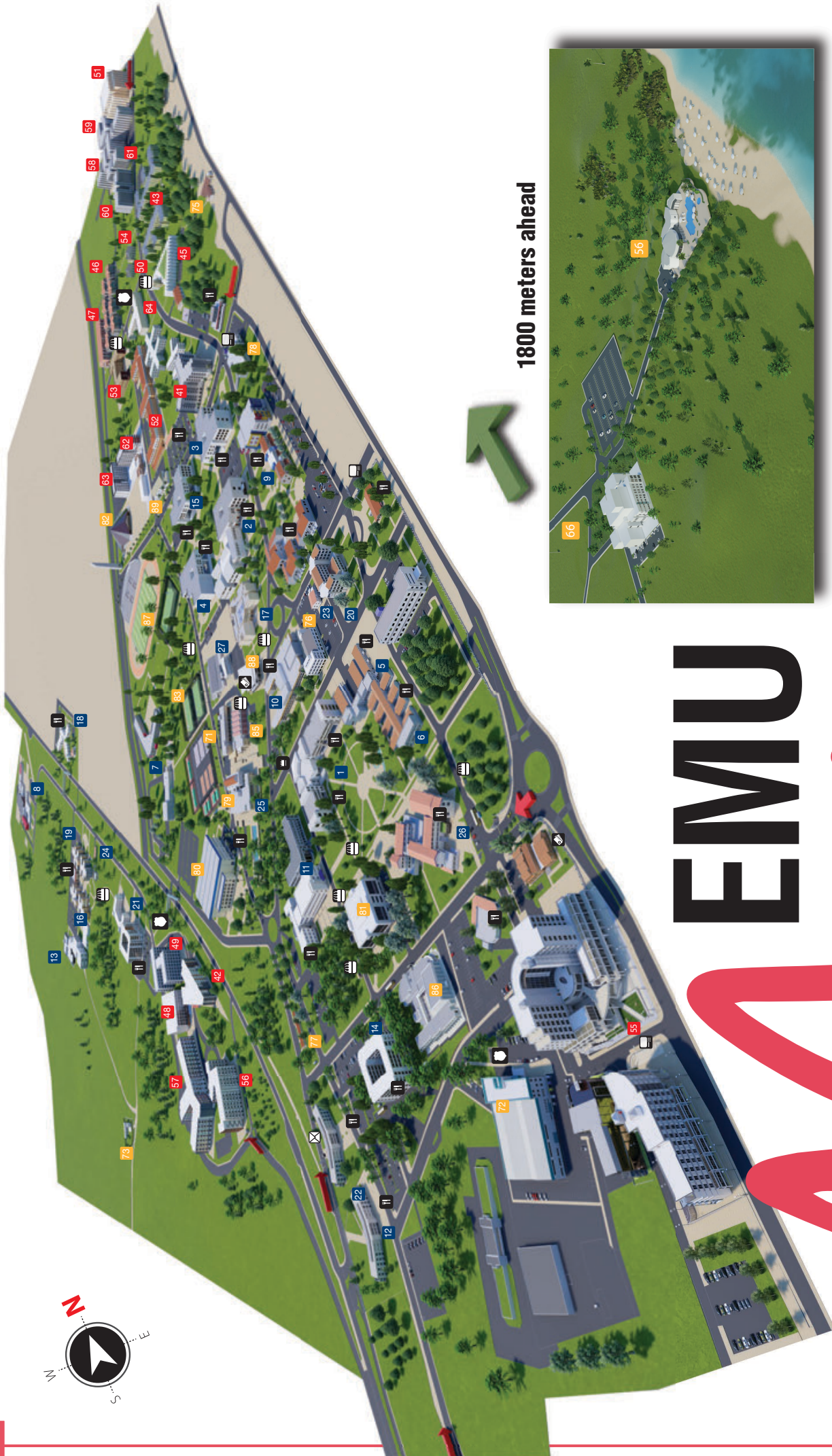
Higher National Diploma-HND-UK



IWSA - International Wine & Spirits Academy



WSET - Wine & Spirit Education Trust



1800 meters ahead



# EMU Map



<http://bit.ly/emucampusmap>

1	Central Lecture Halls	□
2	Department of Civil Engineering	□
3	Department of Computer Engineering	□
4	Department of Electrical & Electronic Engineering	□
5	Department of Fine Arts Education	□
6	Department of Mechanical Engineering	□
7	Eastern Mediterranean Doğa College	□
8	Eastern Mediterranean Doğa Primary School	□
9	Faculty of Architecture	□
10	Faculty of Arts & Sciences	□
11	Faculty of Business & Economics- School of Business & Finance	□
12	Faculty of Communication & Media Studies	□
13	Faculty of Dentistry	□
14	Faculty of Education	□
15	Faculty of Engineering - Department of Industrial Engineering	□
16	Faculty of Health Sciences - School of Health Services	□
17	Faculty of Law - School of Justice	□
18	Faculty of Medicine - Clinical Application Center	□
19	Faculty of Pharmacy	□
20	Faculty of Tourism	□
21	Foreign Language & English Preparatory School and Annex	□
22	Foreign Language & English Prep. School, Modern Language Division	□
23	Institute of Graduate Studies & Research	□
24	Prosthetics Orthotics & Biomechanics Center	□
25	Rector's Office	□
26	School of Computing & Technology	□
27	Visual Arts & Visual Communication Design - Techno Park	□
41	Alfam Vista Dormitory	□
42	Astra Plus Dormitory	□
43	EMU Akdeniz Dormitory	□
45	EMU 2 Dormitory - EMU Dormitory Directorate	□
46	EMU 3 Dormitory	□
47	EMU 4 Dormitory	□
48	Golden Plus Dormitory	□
49	Grand Aras Dormitory	□
50	Halide Edip Guest House - I	□

51	Inn Dorm Dormitory	□
52	Longson Dormitory	□
53	Marmara Dormitory	□
54	Namik Kemal Guest House - II	□
55	Novel Centrepoint Dormitory	□
56	Nural Dormitory	□
57	Pop Art Dormitory	□
58	Prime Living Dormitory	□
59	Ramen Dormitory	□
60	T.C. Yurtkur Necmettin Erbakan Dormitory Block A	□
61	T.C. Yurtkur Necmettin Erbakan Dormitory Block B	□
62	T.C. Yurtkur Necmettin Erbakan Dormitory Block C	□
63	T.C. Yurtkur Necmettin Erbakan Dormitory Block D	□
64	Uğursal Dormitory	□
71	Accounting Affairs & Personnel Affairs	□
72	Administrative Facilities	□
73	Animal Shelter	□
74	EMU Beach Club	□
75	Church	□
76	Computer Center	□
77	Continuing Edu. Center - Total Quality Man. Center	□
78	Health Center - Psy. Counselling Guid. & Res. Center	□
79	International Office	□
80	Lala Mustafa Paşa Sports Complex	□
81	Library	□
82	Mosque	□
83	Open Air Sports Facilities	□
84	Rauf Raif Denktaş Culture and Congress Center	□
85	Registrar's Office	□
86	Social & Cultural Activities Center - EMU Coop Ltd.	□
87	Stadium	□
88	Table d'hone Restaurant - Lapprenti	□
89	Technical Affairs	□

## WHEELCHAIR ACCESS INFORMATION

Full access to all floors	Entrance with ramp
Mostly Accessible	Slope over 10%
Ground floor only	Car parking space for disabled drivers
Toilets accessible to wheelchair users within building	Entrance suitable for wheelchair access

Academic	Food Facilities	ATM
Dormitory	Kiosk	Bank
Administrative	Post Office	Security





# LIFE IN EMU

# Accommodation

EMU has standard EMU dormitories, privately owned dormitories and other dormitories located on campus. B.O.T dorms also have options for those who wish to stay in single rooms, as well as options for small families. Dormitories are generally equipped with:



Kitchen



TV Room



Sports Complex



Cinema



Cafeteria



Laundry Rooms



Study Area



Currency Office



Game Area



Markets



Storage Area



Security 7/24

# Transportation

The university-owned free shuttle services are available on campus and between the campus and the city center throughout the year. This allows students who live off-campus to easily attend their classes.

# Internet

Free Wi-Fi is available at almost every spot of the campus.

# Health Center

Free health services including internal medicine, dermatology, dentistry, E.N.T, gynecology, psychiatry, urology, ophthalmology, Also, EMU-PDRAM offers free and confidential services to assist students that may be experiencing difficulties studying due to personal or social.

# Halls

Rauf Raif Denктаş Culture and Congress Center houses convention and conference rooms, exhibition halls, museums and art workshops. The building is the biggest culture and congress center throughout the region.

# Sports

The sports facilities are accessible to all students for sports like volleyball, basketball, athletics, tennis, handball, billiards, chess, wrestling, cycling, table tennis, triathlon, football, soccer, futsal, squash, gymnastics, bodybuilding, cardio and many more.

# Canteen and Cafeteria

They are 35 in number and ready to provide you with quality service and diverse cuisines. Some may also offer monthly plans with up to 3 course meals at a very affordable price.

#Christmas and New Year



#Welcome Nights



#Architecture Des



#Tourism Days



#Sand Sculpture



#International Night



#Cultural Night



#Career Days



#EMU Civic Involvement





*Sign Week*



*#Social Media and Brand Week*



*#Rock EMCA*



*#Sports Tournaments*



*#Library / Book Day*



*#Graduation Ceremony*

# North Cyprus



90 mins. from Istanbul



80 mins. from Izmir



75 mins. from Ankara



60 mins. from Antalya



50 mins. from Adana

North Cyprus

Turkey

Syria

Iraq

Lebanon

Egypt

Jordan

Saudi Arabia

# About North Cyprus

The Turkish Republic of North Cyprus is a natural paradise in Cyprus, often referred to as the jewel of the Mediterranean Region and home to innumerable legends that will fill you with wonder.

The friendly locals and endless adventures of the island are waiting to be discovered and you cannot afford to miss any of them, so get ready for an exciting experience.

## Major Cities



### Mağusa / Famagusta

Walled City of Famagusta  
Othello Castle  
Namik Kemal Dungeon & Museum  
Salamis Ruins with its Bath House, Gymnasium, and Theatre  
Saint Barnabas Church  
Amazing Sea Shores



### Girne / Kyrenia

Saint Hilarion Castle  
Bellapais Monastery  
Kyrenia Castle  
Kyrenia Harbor  
Buffavento Beach  
Turtle Beach



### Lefkoşa / Nicosia

Walled Old City  
Selimiye Mosque  
Bedastan  
Great Inn (Caravanserai)  
Lapidary Museum  
Colonial Law Courts  
Dereboyu



### Karpaz / Karpasia

Karpasia Peninsula  
Karpaz National Park  
Apostolos Andreas Monastery  
Kantara Castle



### Lefke / Lefka

Soli Ancient City  
Vuni Palace view  
Petra Tou Limnidi  
Acendu Fountain

## Cost of Living



Housing  
\$1200-3000/year



Food  
\$300-400/month



Free EMU bus services in Famagusta



Phone registration (if imported) 14% of value



Entertainment  
\$100/month



1 year Health Insurance  
\$100-110

## At a Glance



Official Name: (TRNC)  
Turkish Republic of Northern Cyprus



Official currency is Turkish Lira, however USD, Euro and Sterling are acceptable



Country Code: 0090  
Area Code: 0392



Mild and refreshing weather with short cold winter, hot summer



Driving is on the left lane



Capital:  
Lefkoşa<sup>(TR)</sup>  
Nicosia<sup>(ENG)</sup>



Official language is Turkish but English is widely spoken



The Middle East, Eastern part of the Mediterranean Sea



Annual Temperature  
10-35°C



Time zone: UTC +2:00 (in summer: UTC +3:00)

# CITY OF FAMAGUSTA

[Turkish: Mağusa or Gazimağusa]  
It is an ancient city, with the Romans, Byzantines, Assyrians, Frankish, Venetians and Ottomans once calling it as home. The old city of Famagusta is famous for the Gothic monuments and surrounded with historic city walls which is a lovely place for sightseeing and entertainment. British Colonials expanded the modern city along the seaside and it became a harbor city, commercial center and tourist resort. Currently, Famagusta as a university city supports student life with safety and comfort.

## Night Life

The exciting night life filled with entertainment and delights along with the friendly hospitality of the locals ensures a gracious welcome and an unforgettable experience.

## Theater

Throughout the year, theatrical performances are held at the EMU Cultural and Congress Center and the Municipality Theater. Some theater shows are performed at Othello Castle and Salamis Antique Theater.

## International Famagusta Art & Culture Festival

The festival takes place during July and includes a line-up of everything from classical and jazz to hip-hop, modern rock and reggae, performed by international and local artists.

## Folklore

Famagusta also boasts myriad myths and legends borrowed from different cultures or originating from the soil. The Turkish Cypriot culture also incorporates a great diversity of folk dances with various influences.

## Cuisine

North Cyprus cuisine is quite varied, with many dishes featuring meat and vegetables to encompass the healthy Mediterranean diet. The local cuisine is an extension of the locals' hospitality.



# Note:

A series of horizontal lines for writing notes, consisting of 25 lines.



You can send us all your questions using the Live Chat option on our website

[www.emu.edu.tr](http://www.emu.edu.tr)



+ you may also contact us via our following

Whatsapp  
Lines

English  
**+90 533 842 19 86**

French  
**+90 533 822 71 83**

Russian  
**+90 533 857 54 18**

Persian  
**+90 533 876 81 12**

Arabic  
**+90 533 820 81 81**



[emu.edu.tr](http://emu.edu.tr)

 [eastern.med.univ](https://www.facebook.com/eastern.med.univ)  [emuofficial](https://www.instagram.com/emuofficial)  [emuofficial](https://twitter.com/emuofficial)

 +90 392 630 11 57-24 44  [international.center@emu.edu.tr](mailto:international.center@emu.edu.tr)  [grad.emu.edu.tr](http://grad.emu.edu.tr)

